

TAX MAP

FRENCHTOWN BOROUGH Hunterdon County, N.J.

Scale: 1" = 100' Jan 1961

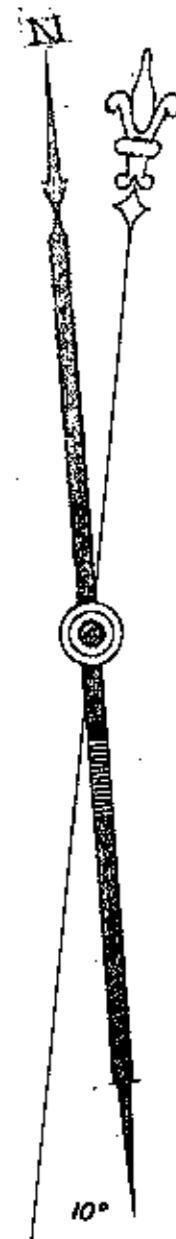
Frank W. Bohren, C.E.
32 CHURCH ST., FLEMINGTON, N.J.

REVISED: 12/1/70

ROBERT C. BOGART & ASSOCIATES
ROUTE 31 & EMERY AVE., FLEMINGTON, NEW JERSEY

REVISED: 12/28/73

SEE KEY MAP FOR LATEST REVISION DATE



SEE SHEET 1

VAN NEEF ENGINEERING ASSOCIATES

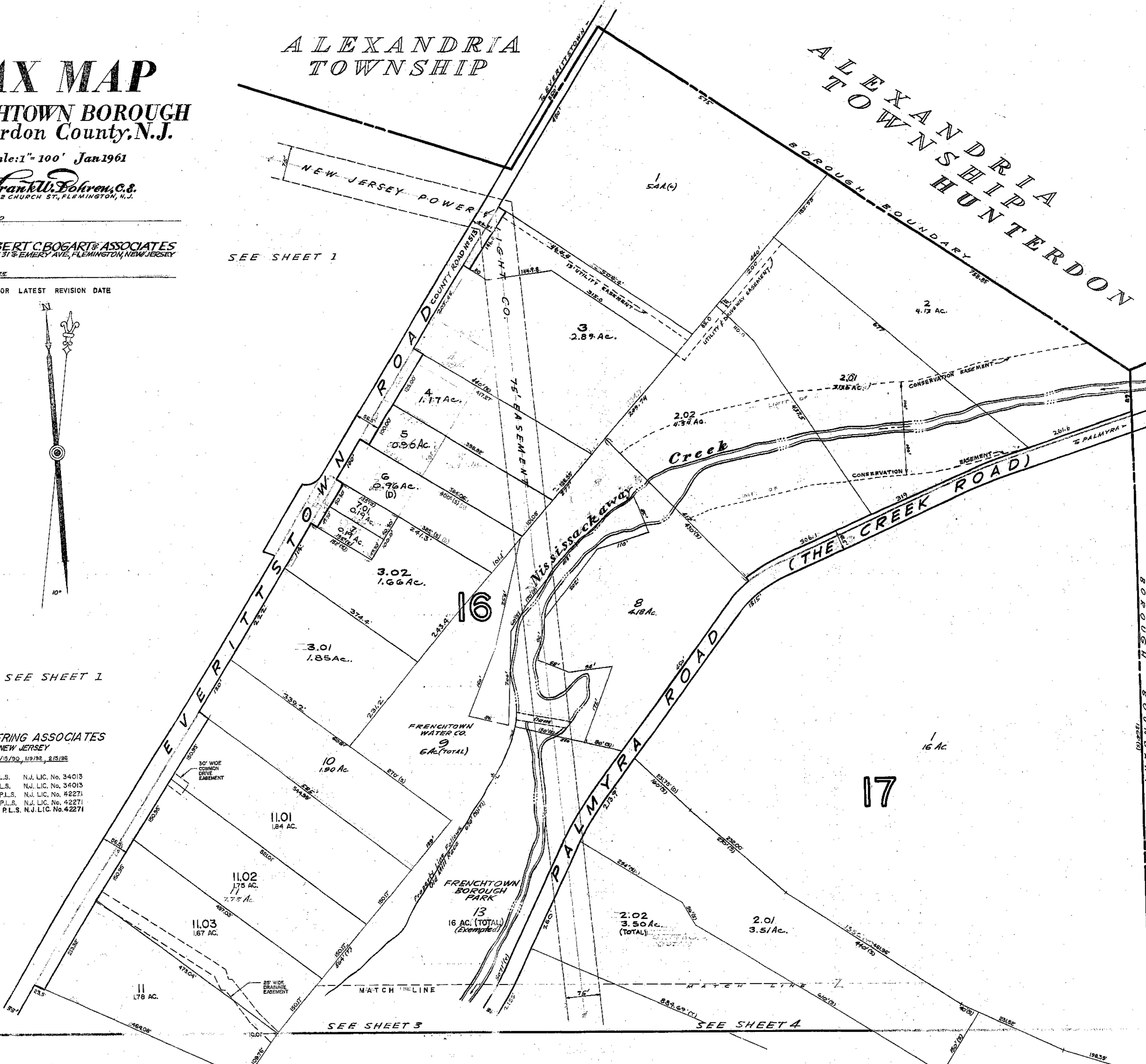
157 ROUTE 31, LEBANON, NEW JERSEY
REVISED: JAN 11, 1982, 5/17/83, 12/15/90, 1/19/92, 2/15/96

- JAN 1961 ERROL MELNICK, P.L.S. N.J. LIC. No. 34013
- FEB 1962 ERROL MELNICK, P.L.S. N.J. LIC. No. 34013
- DEC 20 63 CARL M. HERRMAN, P.L.S. N.J. LIC. No. 42271
- JAN 20 65 CARL M. HERRMAN, P.L.S. N.J. LIC. No. 42271
- DEC 20 65 CARL M. HERRMAN, P.L.S. N.J. LIC. No. 42271

ALEXANDRIA TOWNSHIP

ALEXANDRIA TOWNSHIP HUNTERDON BOROUGH BOUNDARY

KINGWOOD TOWNSHIP HUNTERDON BOROUGH BOUNDARY



SEE SHEET 1

16

17

SEE SHEET 3

SEE SHEET 4

NEW JERSEY DEPARTMENT OF THE TREASURY
DIVISION OF TAXATION
ENGINEERING & RAILROAD TAX BUREAU
APPROVED AS A TAX MAP PURSUANT TO THE
PROVISIONS OF CHAPTER 175, LAWS OF 1912, ETC.
FOR THE DIRECTOR, DIVISION OF TAXATION
C. Deane
STATE SUPERVISOR
APR 10 1961 SERIAL NO. 313