

# TAX MAP

## FRENCHTOWN BOROUGH

### Hunterdon County, N.J.

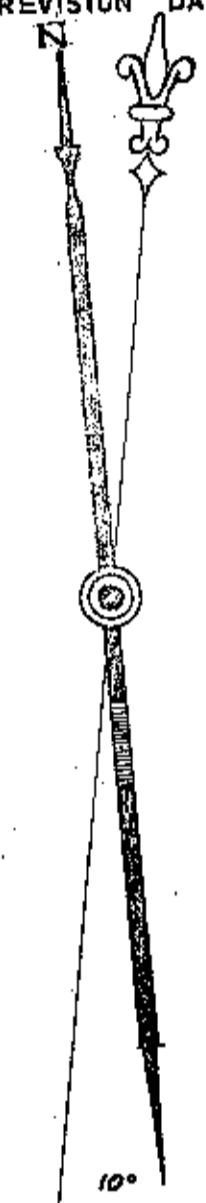
Scale: 1" = 100' Jan 1961

*Frank W. Dolren, C.E.*  
32 CHURCH ST., FLEMINGTON, N.J.

REVISED: 12/11/70

**ROBERT C. BOGART & ASSOCIATES**  
ROUTE 31 & EMERY AVE., FLEMINGTON, NEW JERSEY.

REVISED: 12/28/75  
SEE KEY MAP FOR LATEST REVISION DATE



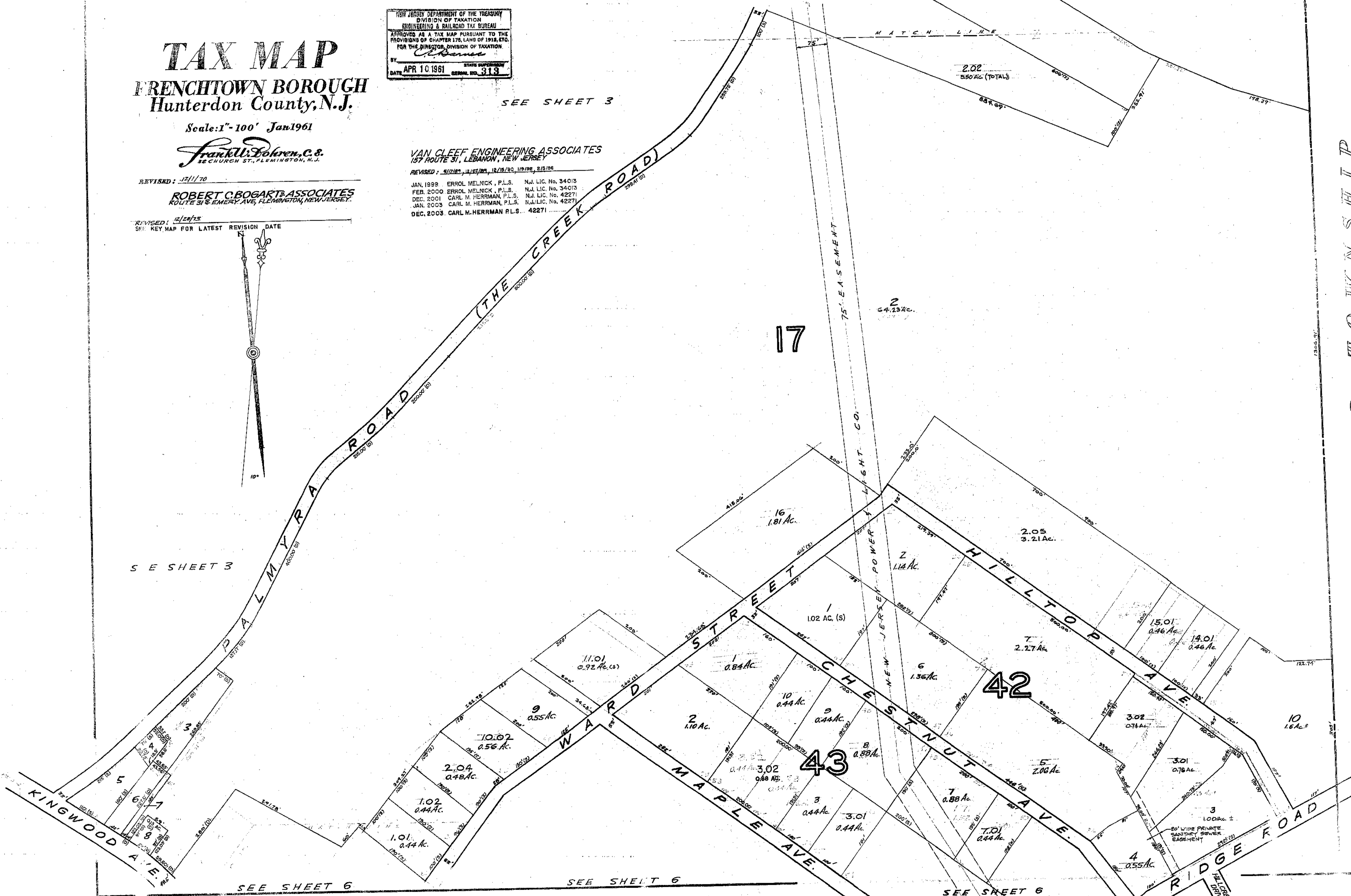
NEW JERSEY DEPARTMENT OF THE TREASURY  
DIVISION OF TAXATION  
ENGINEERING & RAILROAD TAX BUREAU  
APPROVED AS A TAX MAP PURSUANT TO THE  
PROVISIONS OF CHAPTER 176, LAWS OF 1918, ETC.,  
FOR THE DIRECTOR, DIVISION OF TAXATION  
BY: *C. Barone*  
DATE: APR 10 1961 STATE SUPERVISOR  
SERIAL NO. 313

SEE SHEET 3

**VAN CLEEF ENGINEERING ASSOCIATES**  
157 ROUTE 31, LEBANON, NEW JERSEY

REVISED: 5/17/83, 12/22/83, 12/18/83, 11/8/82, 2/5/86  
JAN. 1999 ERROL MELNICK, P.L.S. N.J. LIC. No. 34013  
FEB. 2000 ERROL MELNICK, P.L.S. N.J. LIC. No. 34013  
DEC. 2001 CARL M. HERRMAN, P.L.S. N.J. LIC. No. 42271  
JAN. 2003 CARL M. HERRMAN, P.L.S. N.J. LIC. No. 42271  
DEC. 2003 CARL M. HERRMAN P.L.S. 42271

SEE SHEET 3



SEE SHEET 6

SEE SHEET 6

SEE SHEET 6

KINGWOOD TOWNSHIP  
HUNTERDON COUNTY