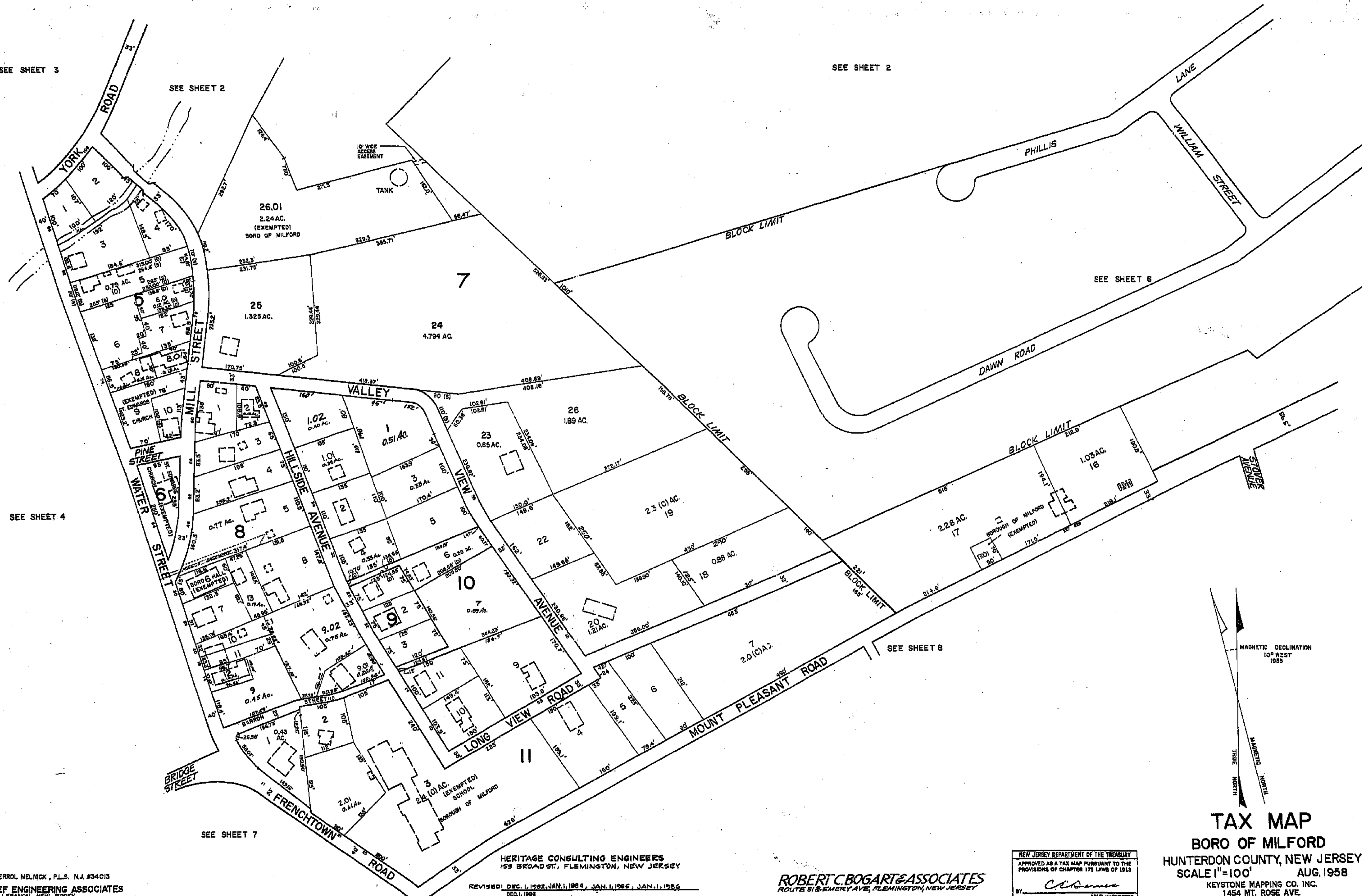


SEE SHEET 3

SEE SHEET 2

SEE SHEET 2

SEE SHEET 6



SEE SHEET 4

SEE SHEET 8

SEE SHEET 7

APRIL, 1996. ERROL MELNCK, P.L.S. N.J. #34013
 VAN CLEEF ENGINEERING ASSOCIATES
 1128, RT. 31, LEGANON, NEW JERSEY
 REVISED: JAN. 20, 1992

HERITAGE CONSULTING ENGINEERS
 153 BROAD ST., FLEMINGTON, NEW JERSEY
 REVISED: DEC. 1, 1992, JAN. 1, 1984, JAN. 1, 1985, JAN. 1, 1986
 DEC. 1, 1988

ROBERT C. BOGART & ASSOCIATES
 ROUTE 51 & EMERY AVE., FLEMINGTON, NEW JERSEY
 REVISED: 10 JULY, 1978, AUG. 1, 1974, MAY 1, 1976, NOV. 1, 1975
 AUG. 1, 1976, NOV. 1, 1978, JAN. 1, 1980, APRIL 1, 1988

NEW JERSEY DEPARTMENT OF THE TREASURY
 APPROVED AS A TAX MAP PURSUANT TO THE
 PROVISIONS OF CHAPTER 175 LAWS OF 1913
 BY: *C. Boman* STATE SUPERVISOR
 SEP 28 1968 SERIAL NO. 209
 DATE: _____

TAX MAP
 BORO OF MILFORD
 HUNTERDON COUNTY, NEW JERSEY
 SCALE 1" = 100' AUG. 1958
 KEYSTONE MAPPING CO. INC.
 1454 MT. ROSE AVE.
 YORK, PENNSYLVANIA
 REVISED NOV. 1, 1968
 REVISED DEC. 12, 1969, REVISED 10 JULY 1, 1973