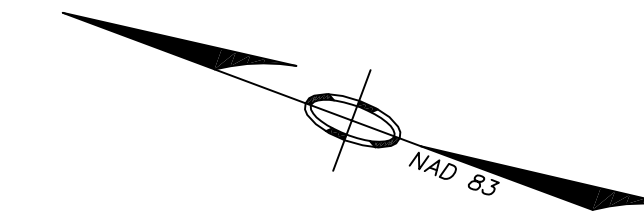


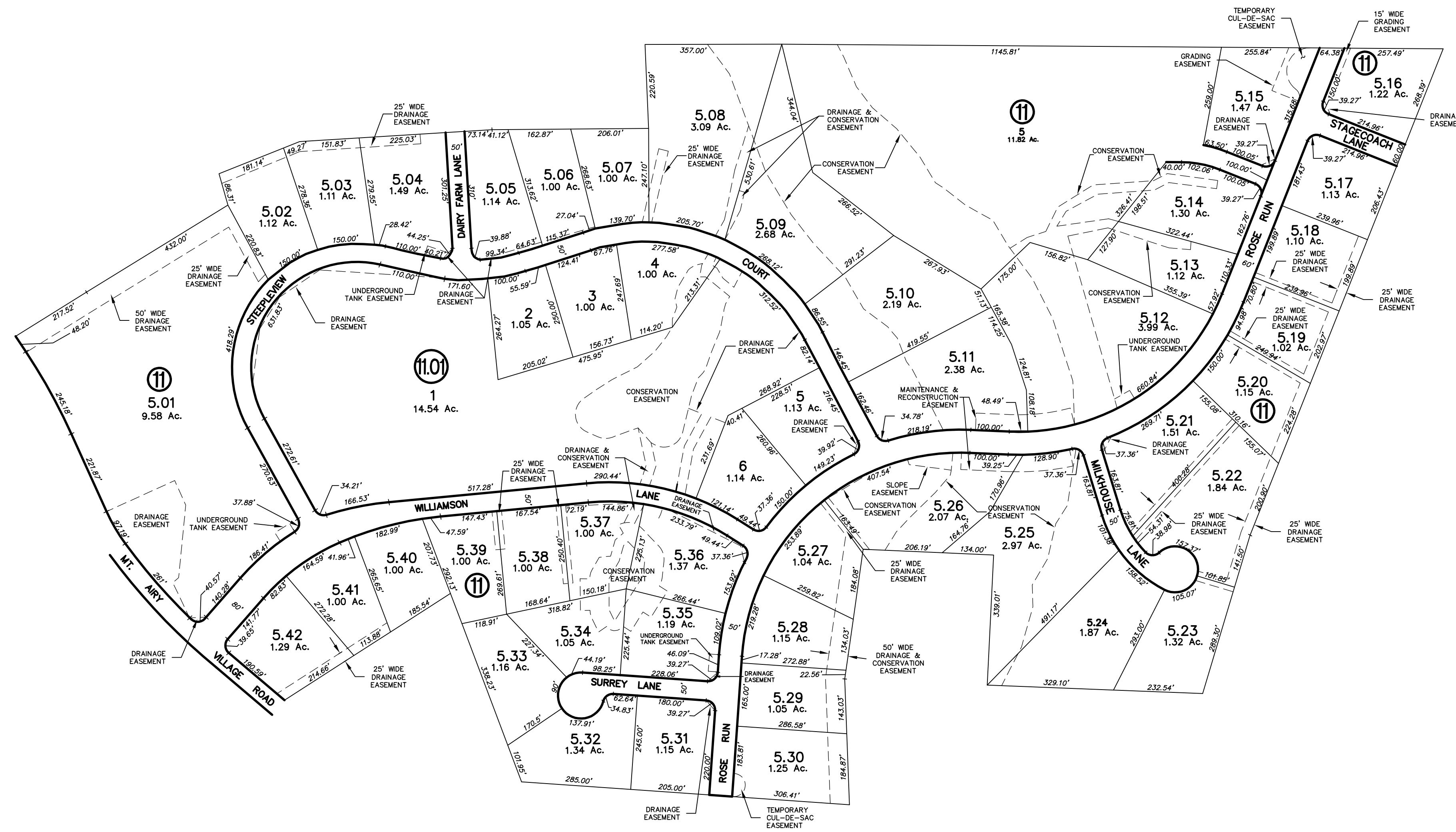
REVISIONS		
DATE	L.S. NAME	LIC. NO.

SHEET 5



SHEET 5

SHEET 5



SHEET 5

NOTE :  
 THIS MAP HAS BEEN DRAWN USING COMPUTER AIDED DRAFTING/  
 DESIGN (CAD/D) AND COORDINATE GEOMETRY (COGO).

"TO SHOW CONDITIONS AS OF NOV., 2007"

**TAX MAP**

TOWNSHIP OF WEST AMWELL  
 HUNTERDON COUNTY - NEW JERSEY  
 SCALE: 1" = 200' JANUARY 2006  
 JAMES D. MCEWEN, N.J.L.S. 31659  
 VAN CLEEF ENGINEERING ASSOCIATES  
 1128 ROUTE 31  
 LEBANON, NEW JERSEY