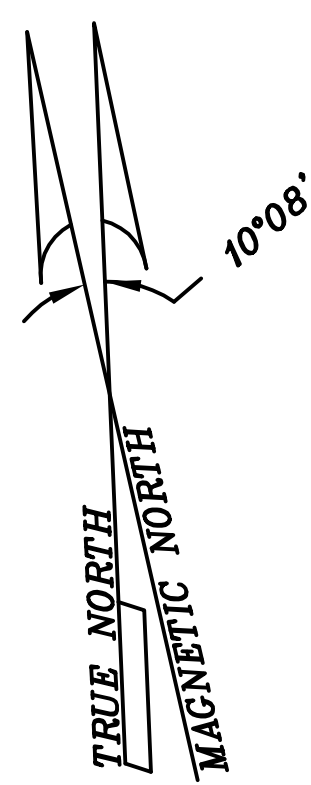
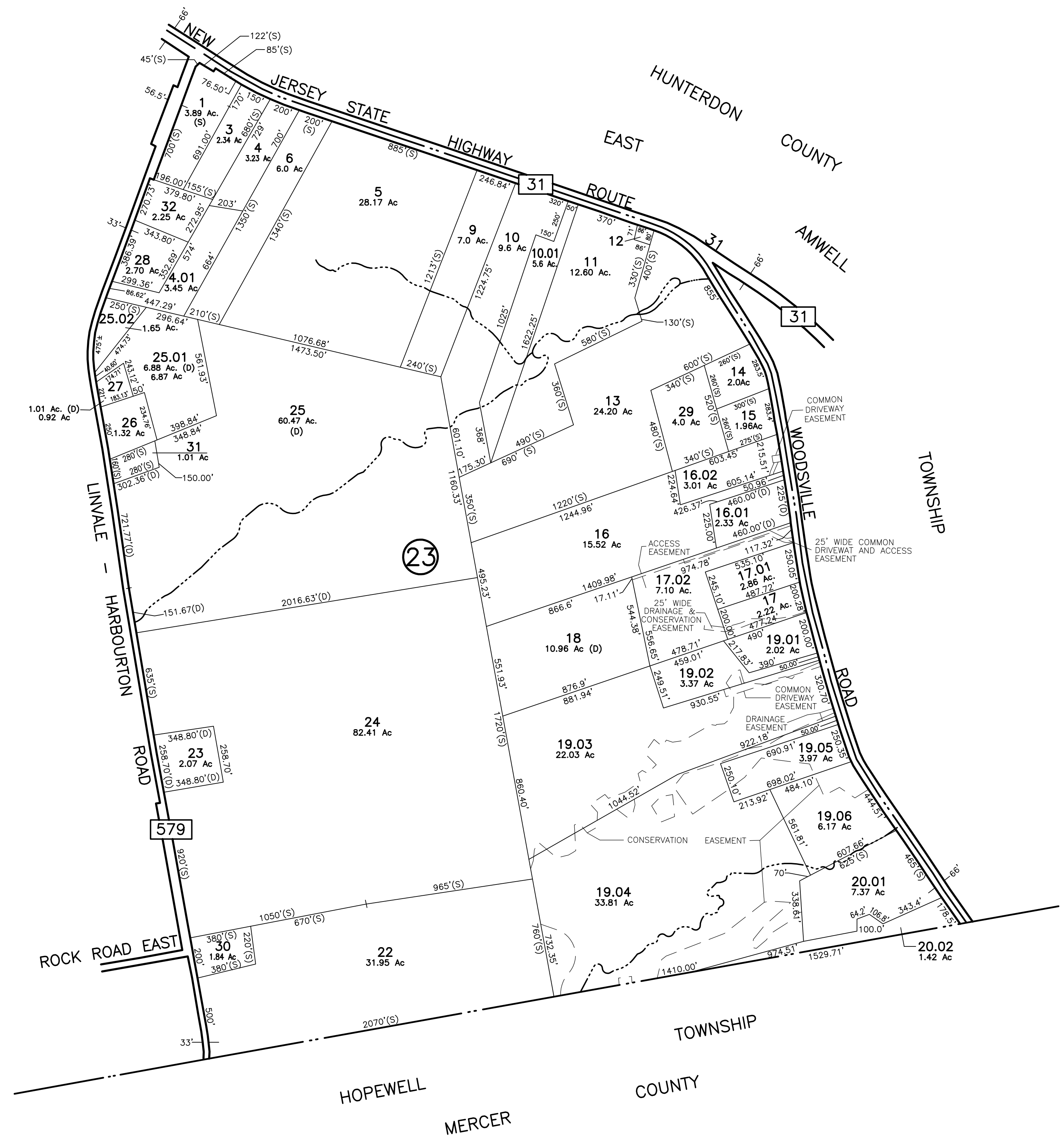


| REVISIONS |                 |          |
|-----------|-----------------|----------|
| DATE      | L.S. NAME       | LIC. NO. |
| NOV. 2007 | JAMES D. McEWEN | #31659   |
|           |                 |          |
|           |                 |          |
|           |                 |          |
|           |                 |          |

SHEET 10

SHEET 15



NEW JERSEY DEPARTMENT OF THE TREASURY  
 DIVISION OF TAXATION  
 PROPERTY ADMINISTRATION  
 APPROVED AS A TAX MAP PURSUANT TO THE AUTHORITY OF  
 P.L.S. 1947-15 & 1949-1  
 FOR THE DIRECTOR DIVISION OF TAXATION  
**James D. McEwen** C.T.A.  
 JAMES I. COLA, CHIEF, LOCAL ASSESSMENT COMPLIANCE  
**Santo C. DiDonato** S.T.A.  
 SANTO C. DIDONATO, SUPERVISING FIELD REPRESENTATIVE  
 DATE: DEC 29 2003 SERIAL NO. 825

**ROBERT C. BOGART & ASSOCIATES**  
 ROUTE 31 & EMORY AVE. FLEMINGTON, NEW JERSEY  
 REVISED: NOV 1, 1972, MARCH 21, 1974, OCT. 1, 1974, MAY 1, 1975  
 RCB NOV 1, 1975, NOV 1, 1976, NOV 1, 1977  
 NOV 1, 1978, JAN 1, 1980, JAN 1, 1981

**HERITAGE CONSULTING ENGINEERS**  
 153 BROAD STREET, FLEMINGTON, NEW JERSEY  
 REVISED: MAY 1, 1982, DEC 1, 1982, APRIL 1 1983, DEC 1, 1983  
 FEB 14, 1984, JAN 1, 1985, JAN 1, 1986

**VAN CLEEF ENGINEERING ASSOCIATES**  
 1128 ROUTE 31, LEBANON, NEW JERSEY  
 REVISED: FEB. 2, 1988, JAN. 10, 1990, DEC. 1, 1990, JAN. 2, 1992  
 JAN. 15, 1992, MAY 7, 1992, JAN. 4, 1993, JAN. 4, 1996

FEB. 1988 ERROL MELNICK, P.L.S. N.J. #34013  
 OCT. 1988 ERROL MELNICK, P.L.S. N.J. #34013  
 JAN. 2001 CARL M. HERRMAN, P.L.S. N.J. #42271  
 DEC., 2003 CARL M. HERRMAN, P.L.S. N.J. #42271

MAP REVISED TO JULY 28, 1964 by FRANK W. BOHREN, C.E.  
 32 CHURCH ST., FLEMINGTON, N.J.  
 REVISED TO AUG. 17, 1965 by FRANK W. BOHREN, C.E.  
 REVISED TO AUG. 22, 1966 by FRANK W. BOHREN, C.E.  
 REVISED TO JUNE 27, 1967 by FRANK W. BOHREN, C.E.  
 REVISED TO SEPT. 3, 1968 by FRANK W. BOHREN, C.E.  
 REVISED TO APRIL 1, 1970 by FRANK W. BOHREN, C.E.  
 REVISED TO JAN. 1, 1971 by FRANK W. BOHREN, C.E.

NEW JERSEY DEPARTMENT OF THE TREASURY  
 DIVISION OF TAXATION  
 APPROVED AS A TAX MAP PURSUANT TO THE  
 PROVISIONS OF CHAPTER 175 LAWS OF 1913  
 BY **C.E. BARNETT** S.T.A.  
 SUPERVISOR  
 DATE: DEC 21 1959 SERIAL NO. 240

THIS SHEET IS A DIGITIZED COPY PREPARED BY ARH  
 ENGINEERS AND SURVEYORS, 850 S. WHITE HORSE PIKE,  
 HAMMONTON NJ, OCTOBER 2005.  
 THE ORIGINAL APPROVED TAX MAP WAS PREPARED BY  
 AERO SERVICE CORPORATION AND OTHERS.  
 THE ORIGINAL APPROVED MAP IS ON FILE IN THE OFFICE  
 OF THE ENGINEER.

"TO SHOW CONDITIONS AS OF NOV., 2007"  
**WEST AMWELL TOWNSHIP** TAX MAP  
 HUNTERDON COUNTY NEW JERSEY  
 SCALE: 1" = 400' OCTOBER 1959  
 AERO SERVICE CORPORATION  
 210 E. COURTLAND STREET PHILADELPHIA, PA