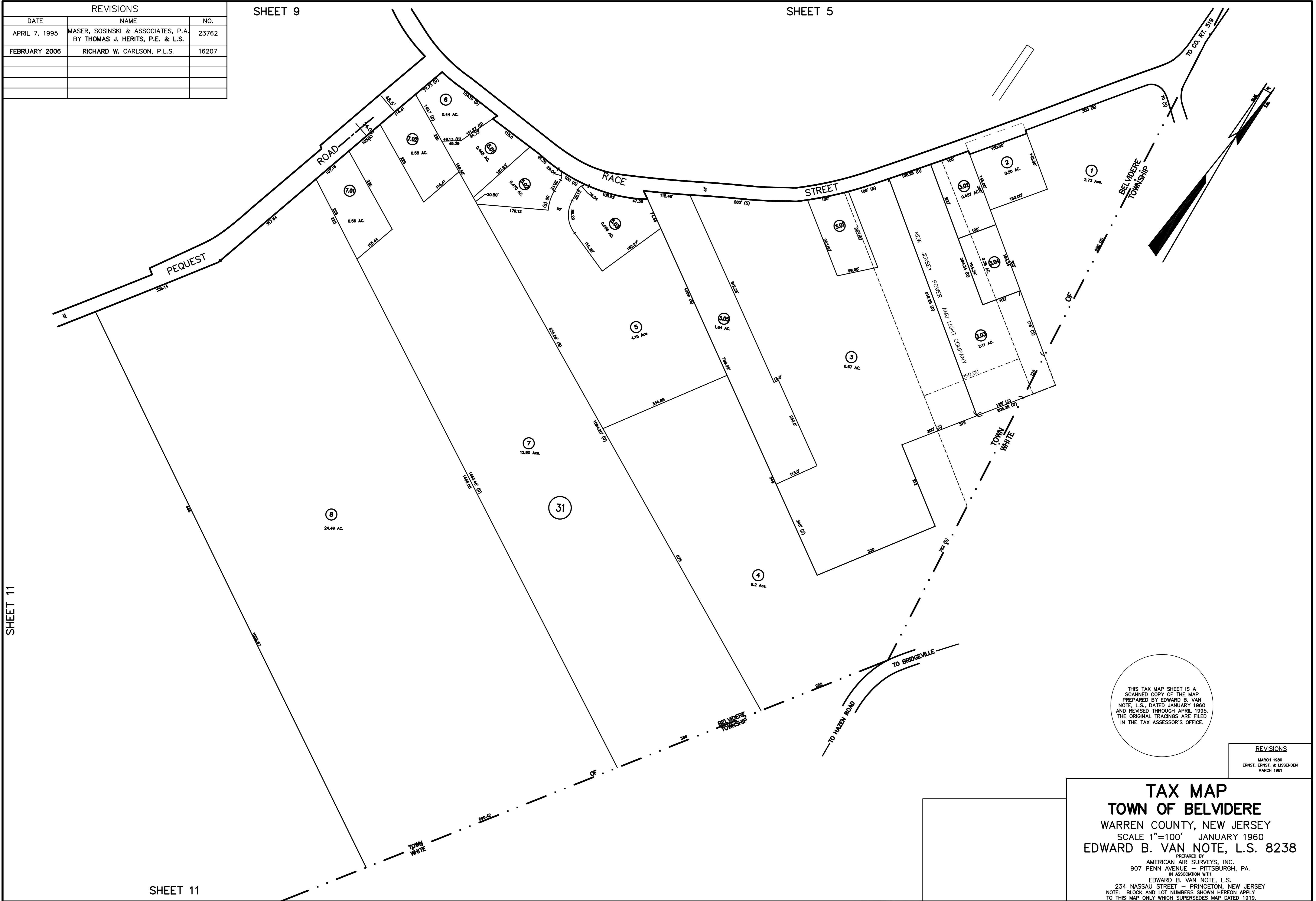


REVISIONS		
DATE	NAME	NO.
APRIL 7, 1995	MASER, SOSINSKI & ASSOCIATES, P.A. BY THOMAS J. HERITS, P.E. & L.S.	23762
FEBRUARY 2006	RICHARD W. CARLSON, P.L.S.	16207

SHEET 9

SHEET 5



SHEET 11

SHEET 11

THIS TAX MAP SHEET IS A
SCANNED COPY OF THE MAP
PREPARED BY EDWARD B. VAN
NOTE, L.S., DATED JANUARY 1960
AND REVISED THROUGH APRIL 1995.
THE ORIGINAL TRACINGS ARE FILED
IN THE TAX ASSESSOR'S OFFICE.

REVISIONS
MARCH 1980
ERNEST, ERNST, & LISSENDEN
MARCH 1981

TAX MAP
TOWN OF BELVIDERE
WARREN COUNTY, NEW JERSEY
SCALE 1"=100' JANUARY 1960
EDWARD B. VAN NOTE, L.S. 8238

PREPARED BY
AMERICAN AIR SURVEYS, INC.
907 PENN AVENUE - PITTSBURGH, PA.
IN ASSOCIATION WITH
EDWARD B. VAN NOTE, L.S.
234 NASSAU STREET - PRINCETON, NEW JERSEY

NOTE: BLOCK AND LOT NUMBERS SHOWN HEREON APPLY
TO THIS MAP ONLY WHICH SUPERSEDES MAP DATED 1919.