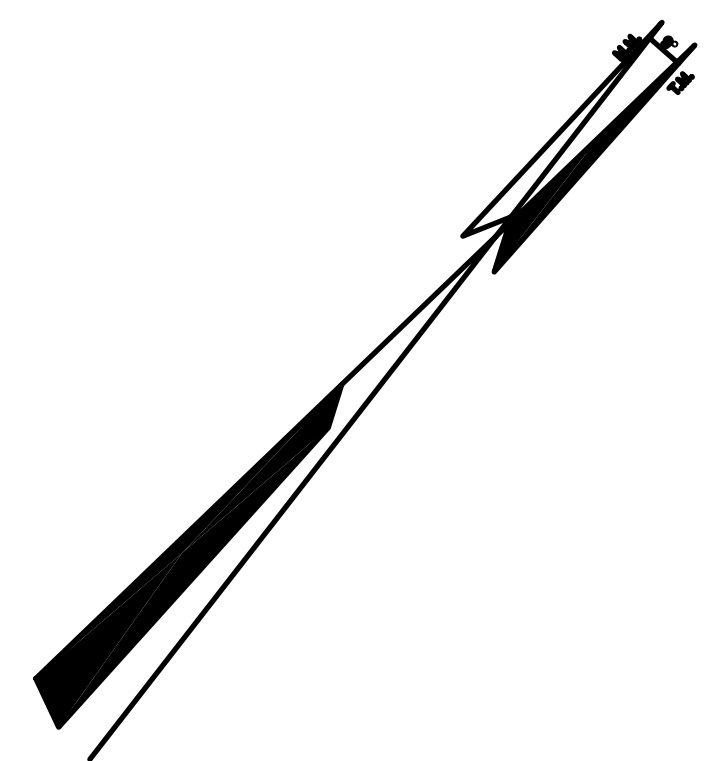


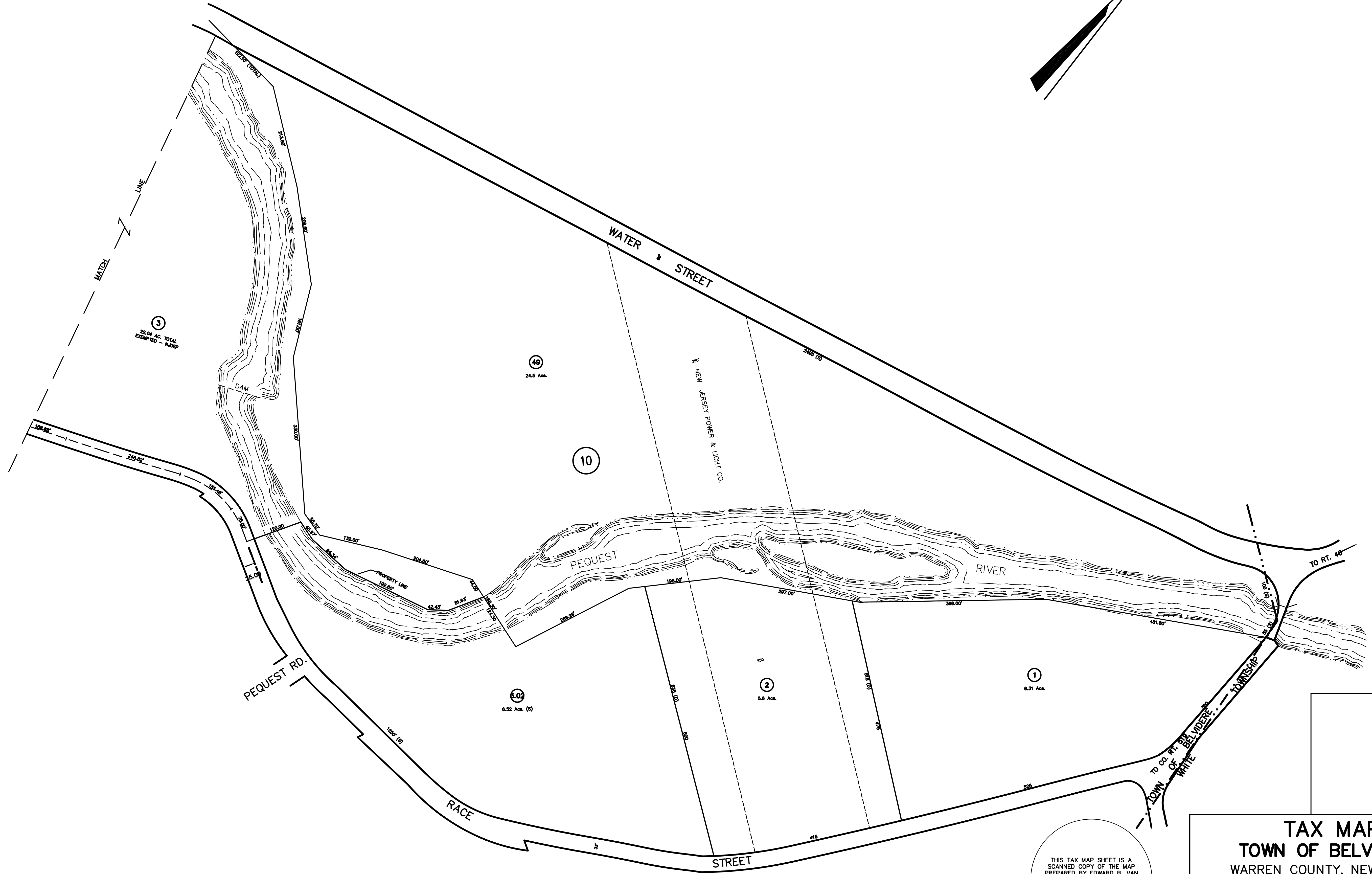
SHEET 4

REVISIONS		
DATE	NAME	NO.
FEBRUARY 2006	RICHARD W. CARLSON, P.L.S.	16207



SHEET 6

SHEET 9



REVISIONS		
DATE	NAME	NO.
MARCH 1980	ERHST, ERNST, & LISSENDEN	MARCH 1981

THIS TAX MAP SHEET IS A  
 SCANNED COPY OF THE MAP  
 PREPARED BY EDWARD B. VAN  
 NOTE, L.S., DATED JANUARY 1960  
 AND REVISED THROUGH MARCH 1981.  
 THE ORIGINAL TRACINGS ARE FILED  
 IN THE TAX ASSESSOR'S OFFICE.

**TAX MAP**  
**TOWN OF BELVIDERE**  
 WARREN COUNTY, NEW JERSEY  
 SCALE 1"=100' JANUARY 1960  
 EDWARD B. VAN NOTE, L.S. 8238

PREPARED BY  
 AMERICAN AIR SURVEYS, INC.  
 907 PENN AVENUE - PITTSBURGH, PA.  
 IN ASSOCIATION WITH  
 EDWARD B. VAN NOTE, L.S.  
 234 NASSAU STREET - PRINCETON, NEW JERSEY

NOTE: BLOCK AND LOT NUMBERS SHOWN HEREON APPLY  
 TO THIS MAP ONLY WHICH SUPERSEDES MAP DATED 1919.

SHEET 10